

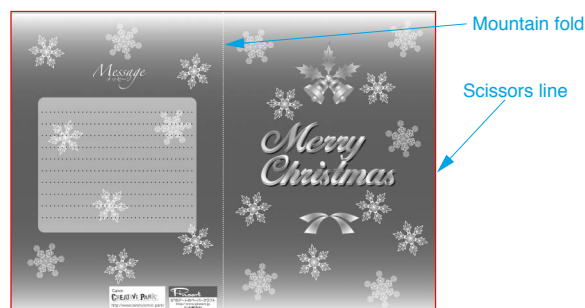


A Assemble the card

Use pattern: Page2 / Page3.

① Cut out A1 by cutting along the lines.

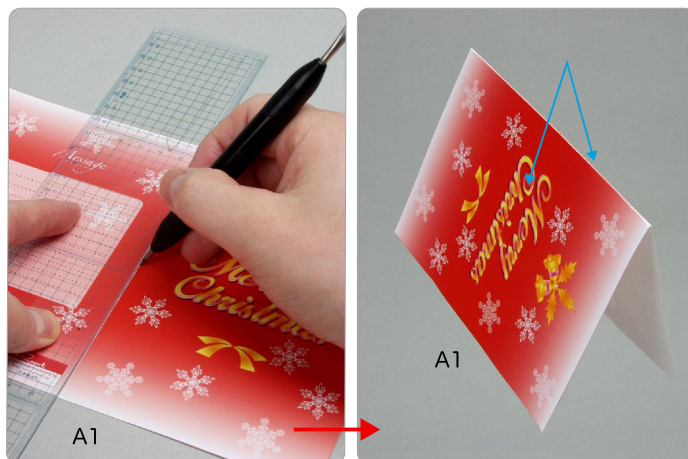
★ Cut along the line marked ———.



A1Card ← Parts No. / Parts name

② Make a mountain fold on A1.

★ Trace along the mountain fold line with a stencil pen, scoring it to make it easier to fold.



Tools	Notation Key
Scissors	———— Scissors line
Paste, or woodwork glue Mountain fold
Stencil pen, or bodkin	— · — · — Valley fold
Ruler	+ Glue spot
	A1, B1 Parts No.
	+A1, +B1 Numbers of parts to be attached

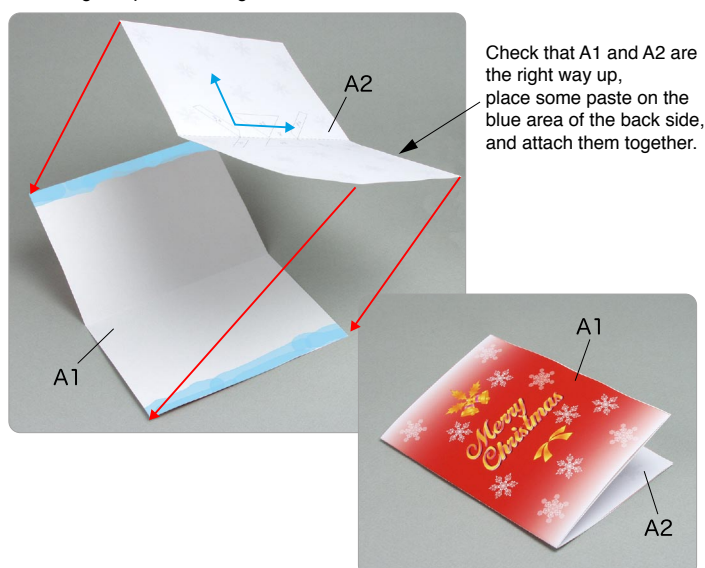
- ◆ The Assembly instructions are divided into two blocks:
A (card) and B (wreath).
Follow the instructions for each block to assemble your card.

<Caution>

- ✂ Keep scissors and glue away from small children.
- ✂ Be careful not to cut your fingers when using scissors.

③ Attach A1 and A2, and the card is complete.

★ Using the photo as a guide, attach in the direction of the arrow.



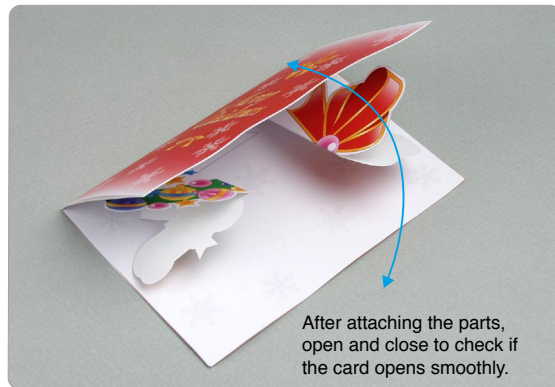
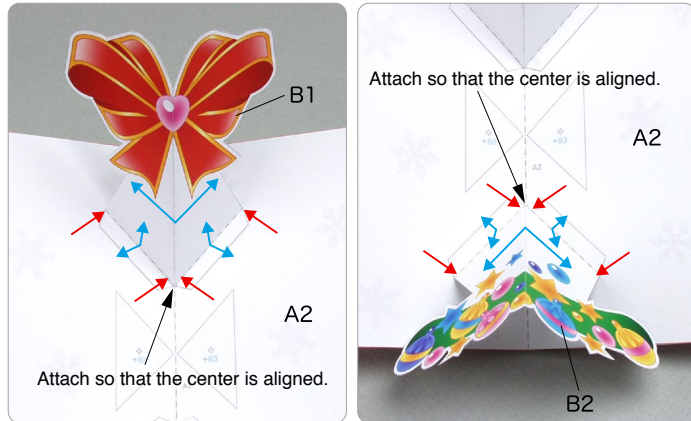
Check that A1 and A2 are the right way up, place some paste on the blue area of the back side, and attach them together.

B Assemble the wreath

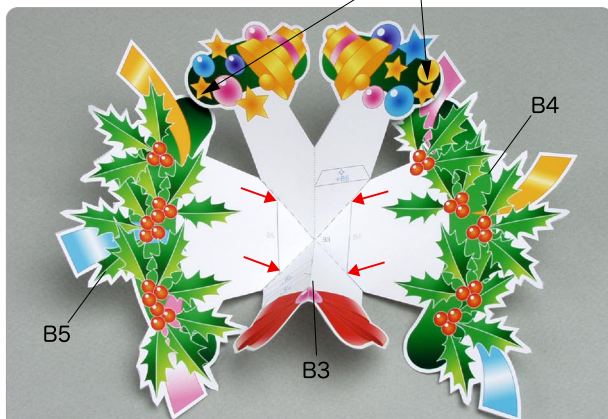
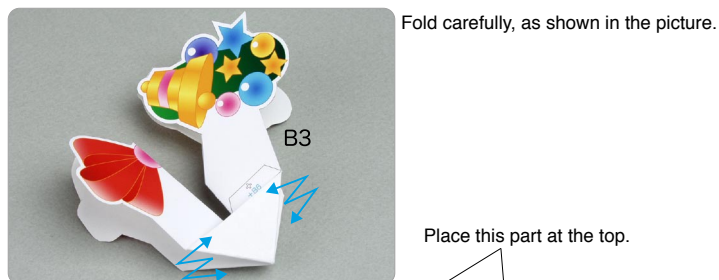
Use pattern: Page4 to Page6.

① Attach B1 and B2 to the card.

★ After attaching the parts, open and close to check if the card opens smoothly.



② Attach B4 and B5 to B3.



③ Attach B6 to B3, and attach B7 and B8 to them.



④ Attach B9 to the wreath, and attach B10 to them.



⑤ Attach the wreath to the card, and your card is complete!

